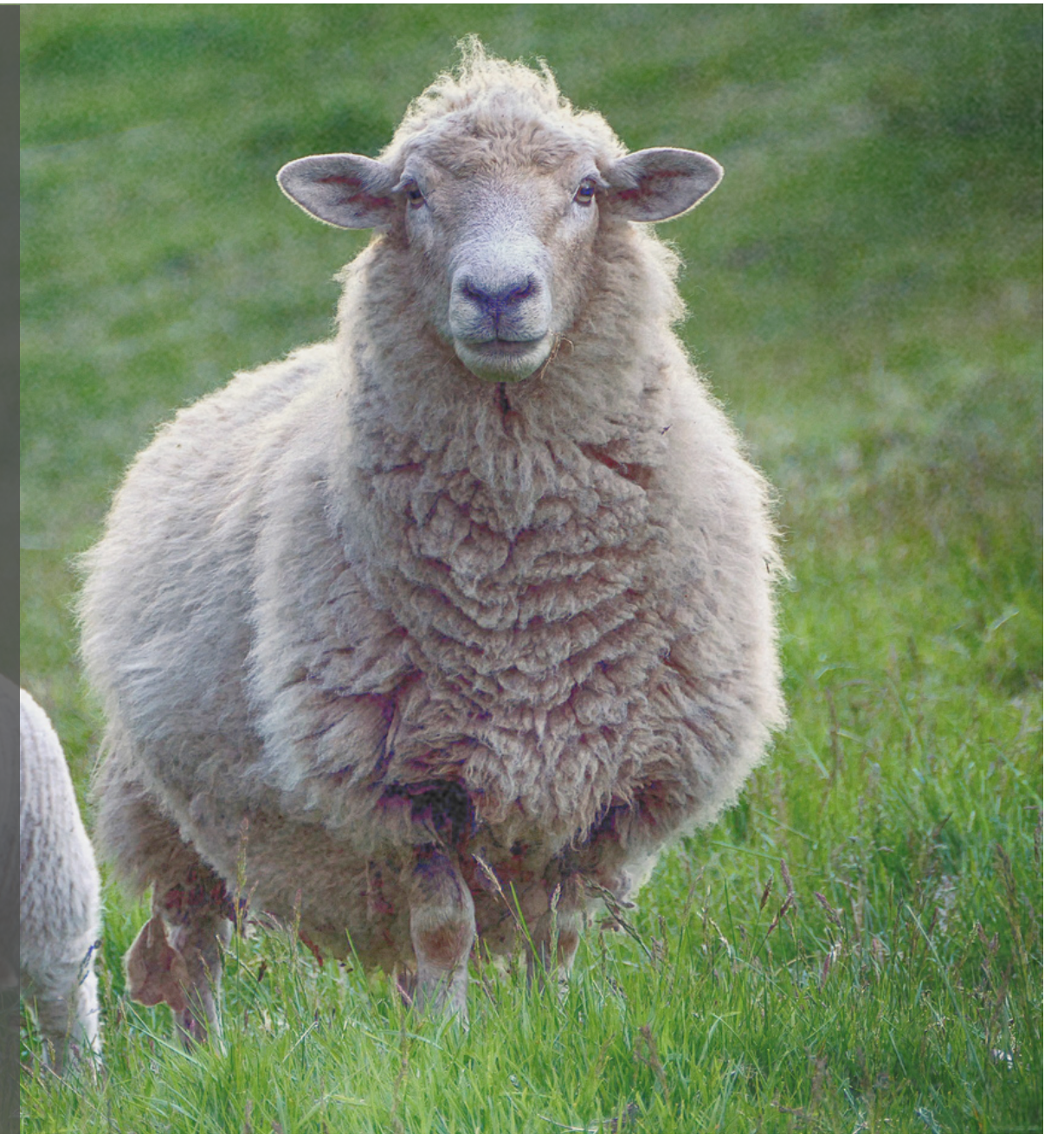


About Us

Dooleys Wool is situated in County Offaly right on the Laois Tipperary border, at the foot of the Slieve Bloom Mountains. Our premises is adjacent to the Dooley farm which is now on its 8th generation. Seamus Dooley, a sheep farmer, started off in 1950 shearing sheep to earn money and in 1955 began to purchase wool from farmers all around the Midlands of Ireland. Seamus's sons, Kevin and Fergus continue this family tradition and intend to keep it going for many generations to come.

We only source our wool from local Irish farmers and our products are 100% pure Irish wool, using cotton covers and recyclable, reusable packaging. Wool is one of the most natural, sustainable and environmentally friendly fibres available and has been proven to improve sleep by up to 25% when used in bedding.





Our Products

We produce a collection of duvets and pillows made from wool which is derived from local flocks of sheep. We are delighted to have our local suppliers and farmers on board to produce the finest of Irish wool for our products. We guarantee you that you will experience a more natural comfortable sleep.

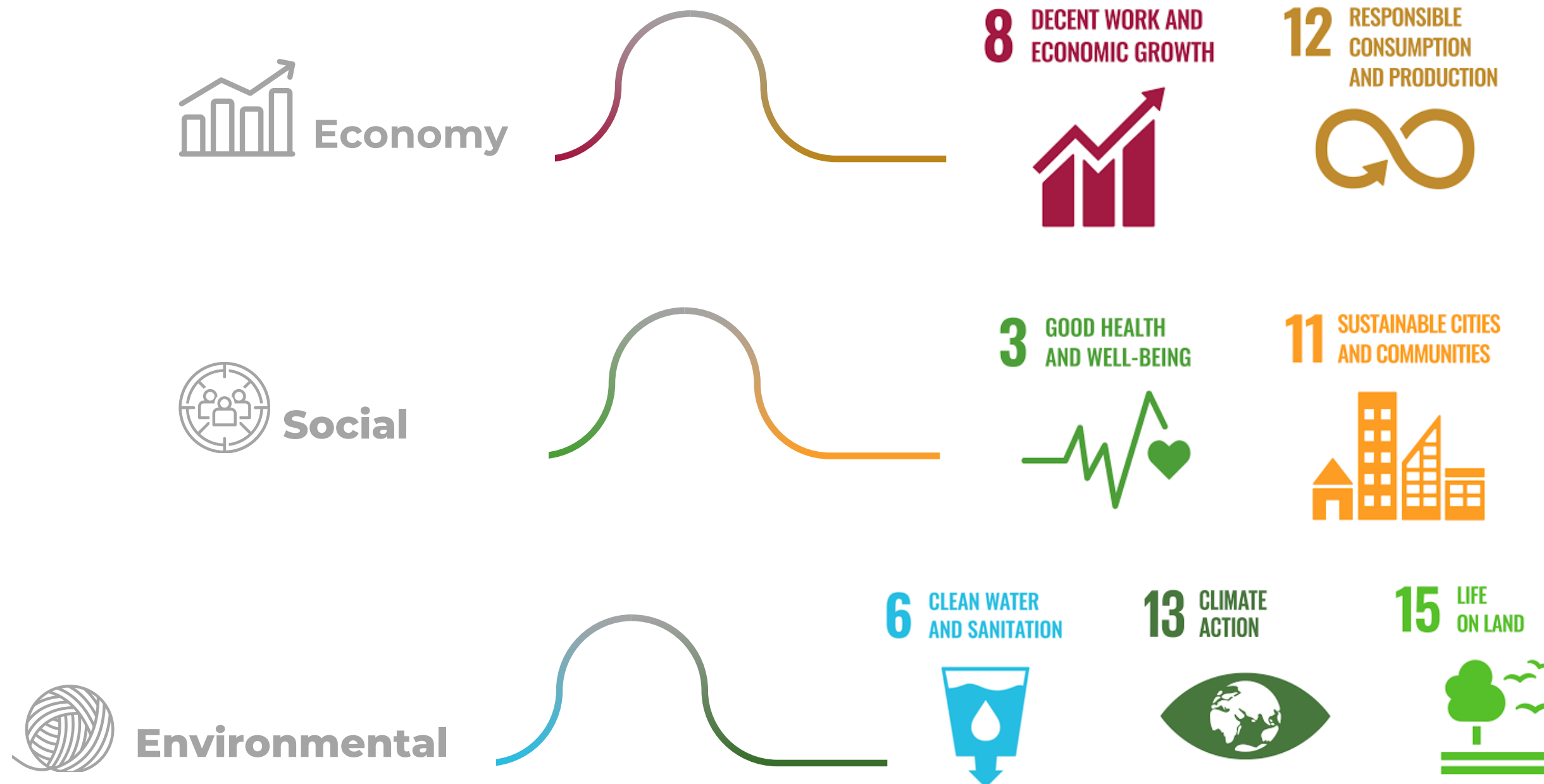


Wool duvets and pillows naturally regulate body temperature. If you get hot at night or suffer from night-sweats, the natural properties of a wool duvet will help regulate your body temperature and keep you cool during the night. If you are cold, the wool is highly insulative and makes great winter duvets.



Our Sustainable Development Goals

At Dooleys Wool we know that true Sustainability addresses Social, Environmental and Economic concerns. We are working towards Sustainability by using the framework of the Sustainable Development Goals to communicate how we achieve this. The three tiers and their related Goals are outlined below.





Sustainable Development Goals - **ECONOMY**

At Dooleys Wool we are continuing in our tradition of supporting a local and circular economy. Our wool is derived from local flocks of sheep and we source additional wool from our local suppliers and farmers. This ensures that we get the finest Irish wool for our products while boosting the local economy. Pure Wool is a 100% Natural, Renewable, Sustainable & Biodegradable product. As a resource we can be assured that our economic growth is causing no harm to our local environment.



Target 8.4 'Improve progressively, through 2030, global resource efficiency in consumption and production and endeavour to decouple economic growth from environmental degradation, in accordance with the 10-Year Framework of Programmes on Sustainable Consumption and Production, with developed countries taking the lead'

Target 8.9 'By 2030, devise and implement policies to promote sustainable tourism that creates jobs and promotes local culture and products'





Sustainable Development Goals - **ECONOMY**

Wool products have long lifespans and are recyclable, meaning they are used or worn longer than other textile fibre products ensuring longevity of the product life cycle. Wool will biodegrade in the ground after 6 months compared to synthetic fibres which can take anything from 20-200 years.



Target 12.2 - By 2030, achieve the sustainable management and efficient use of natural resources

Target 12.4 - By 2020, achieve the environmentally sound management of chemicals and all wastes throughout their life cycle, in accordance with agreed international frameworks, and significantly reduce their release to air, water and soil in order to minimize their adverse impacts on human health and the environment.

Target 12.5 - By 2030, substantially reduce waste generation through prevention, reduction, recycling and reuse





Sustainable Development Goals - **SOCIAL**

3 GOOD HEALTH AND WELL-BEING



Our Wool products are great for supporting health and wellbeing as they reduce environmental toxins in the home. Wool filled duvets effectively repel dust mites making them suitable for asthma and allergy sufferers. Wool Products can improve air quality in the home by absorbing toxic VOCs (Volatile Organic Compounds). Wool is also flame resistant and does not burn. When exposed to high temperatures wool does not produce toxic gases. Choosing wool products increases the safety of your home.

Target 3.9 By 2030, substantially reduce the number of deaths and illnesses from hazardous chemicals and air, water and soil pollution and contamination





Sustainable Development Goals - SOCIAL

Target 11.4 Strengthen efforts to protect and safeguard the world's cultural and natural heritage.

11 SUSTAINABLE CITIES AND COMMUNITIES



Cultural and natural heritage helps the sustainable development of communities by contributing to maintaining good health, sustaining livelihoods and respecting environmental sustainability. Our traditional knowledge, values and practices gathered over 8 generations of farming have guided us in our management of the surrounding natural environment for decades. Today, our contribution (and that of many other farming businesses) of intangible cultural heritage to Ireland's environmental sustainability is recognized as an essential element of biodiversity conservation, sustainable natural resource management and natural disaster preparedness.



Sustainable Development Goals - ENVIRONMENTAL

6 CLEAN WATER AND SANITATION



Target 6.3 By 2030, improve water quality by reducing pollution, eliminating dumping and minimizing release of hazardous chemicals and materials, halving the proportion of untreated wastewater and substantially increasing recycling and safe reuse globally.

Wool Naturally Biodegrades In water contributing to water supply health. Because of its high-performance characteristics, it is washed less often, at lower temperatures and line dried, meaning it has a low climate impact.

13 CLIMATE ACTION



Target 13.3 Improve education, awareness-raising and human and institutional capacity on climate change mitigation, adaptation, impact reduction and early warning

Dooleys Wool is passionate about educating people as to the multilayered environmental benefits of wool. Check out our website for more information on how Dooleys Wool is helping to reduce the local impacts of environmental degradation and climate change.

15 LIFE ON LAND



Target 15.5 Take urgent and significant action to reduce the degradation of natural habitats, halt the loss of biodiversity and, by 2020, protect and prevent the extinction of threatened species

At Dooleys Wool the responsible guardianship of the land is at the heart of all we do. Wool will biodegrade into the ground after 6 months compared to synthetic fibres. In addition, as it biodegrades it slowly releases valuable nutrients and carbon back into the soil.



Generations of Experience

Meet Us.....



Contact Us....